

GHYCZY



HOME OF TREASURES is all about the unconventional lifestyle of a traveler with a story to tell. Constructions typically come in straight lines. Symmetrical beams support luscious colors and materials in which patterns are thrown together to form a magic harmony. Home of Treasures is to complete and accompany your precious personal collection.

Rio Prati 50





[Previous page](#)
Cabinet —Concept
Lamp —Concept
Bench—Duet GB03
Coffee table—Pioneer T53D
Console table—T53L
Stool —Concept
Sofa—Safari GP01
Side table—Pioneer T79L
Floor lamp—Concept

[Right](#)
Console table —Pioneer T54/3L



This page
Chair — Safari S06
Side table — Pivot T82

Right
Coffee table — Pivot T48/4
Chair — Safari S06
Armchair — Safari GP03
Floor lamp — Safari MW24



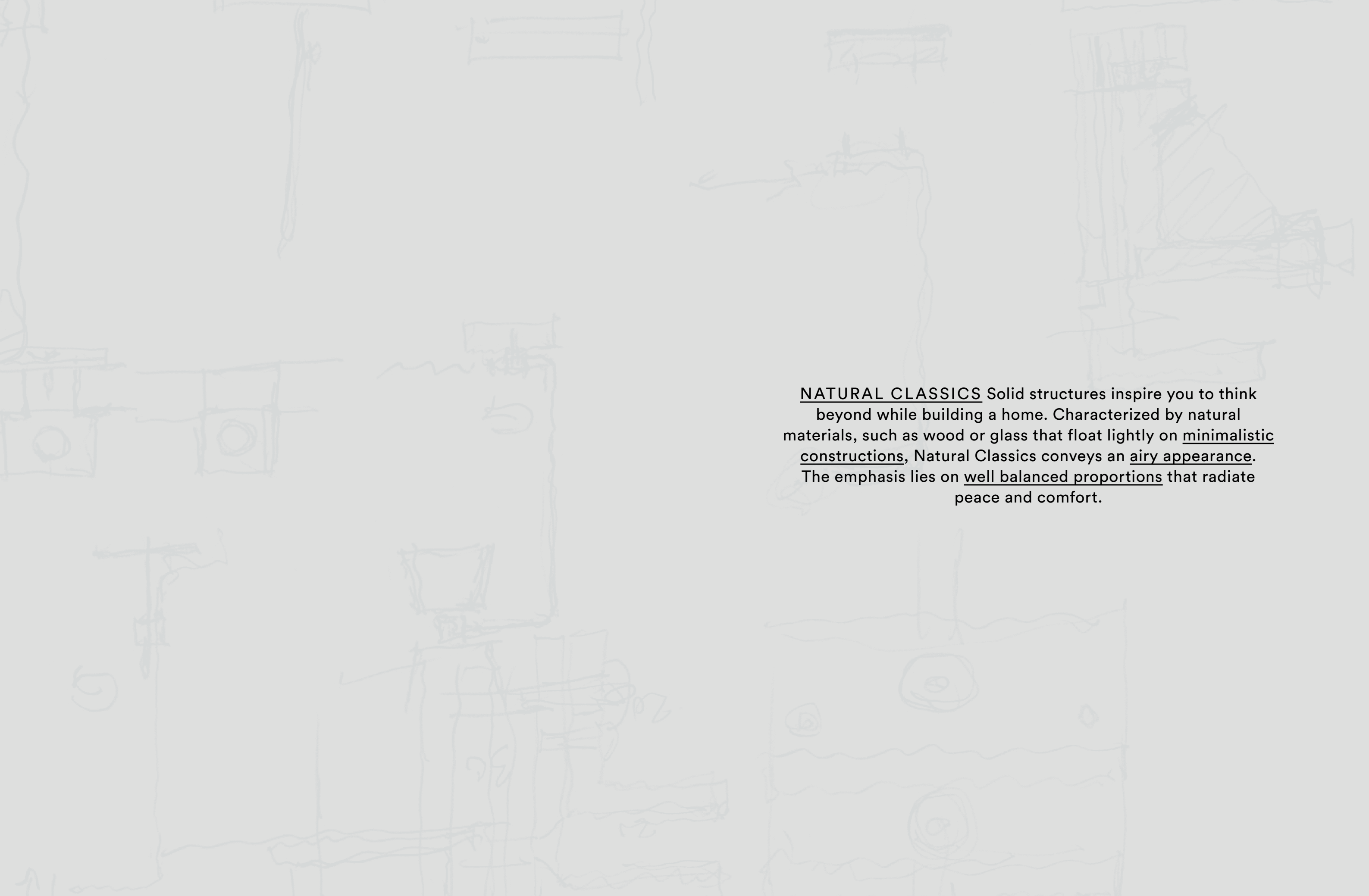


Left

Lamp—Safari MW10
Side table—Pioneer T79
Wall shelf—Pioneer RP01
Chair—Safari S02
Pendant lamp—Concept
Trolley—Pioneer T63S
Bar stool—Duet S07

This page

Chair—Safari S02
Trolley—Pioneer T63S



NATURAL CLASSICS Solid structures inspire you to think beyond while building a home. Characterized by natural materials, such as wood or glass that float lightly on minimalistic constructions, Natural Classics conveys an airy appearance. The emphasis lies on well balanced proportions that radiate peace and comfort.



Previous page
Coffee table—Pioneer T57D
Side table—Pioneer T79L
Side table—Pivot T82
Sofa—Safari GP01
Side table—Pioneer T79 special
Floor Lamp—Safari MW24
Bench—Duet GB03
Console table—Duet T73
Lamp—Safari MW10
Stool—Concept

This page
Coffee table—Pioneer T57D

Right
Console table—Duet T73
Lamp—Safari MW10
Bench—Duet GB03






Left
Side table—Pivot T82
Side table—Pioneer T79
Chair—Safari S02 Limited 50 pcs



[This page](#)
Side table—Pivot T82
Side table—Pioneer T79

[Right](#)
Side table—Pivot T82
Side table—Pioneer T79
Side table—Pivot T82
Armchair—Safari GP01
Floor lamp—Safari MW24
Side table—Pivot T82 Limited 30 pcs
Side table—Pioneer T79





VIBRANT VELVET Dedicated to timeless beauty and design,
Vibrant Velvet is the masterpiece of all GHYCZY looks.
Precious materials and expressive patterns offer a more dramatic
perspectives on GHYCZY design. Each piece conveys a sense
of mystery that is yours to experience.





Previous page

Console table—Pioneer T53L

Lamp—Safari MW08

Mirror—Safari D01

Side table—Pivot T82 Limited 30 pcs

Sofa—Safari GP02

Pendant lamp—Safari MW29

Wardrobe—Safari G01

Trolley—Pioneer T63S

Left

Side table—Pivot T82

Armchair—Safari GP02

Floor lamp—Safari MW16 special

Side table—Pioneer T79L

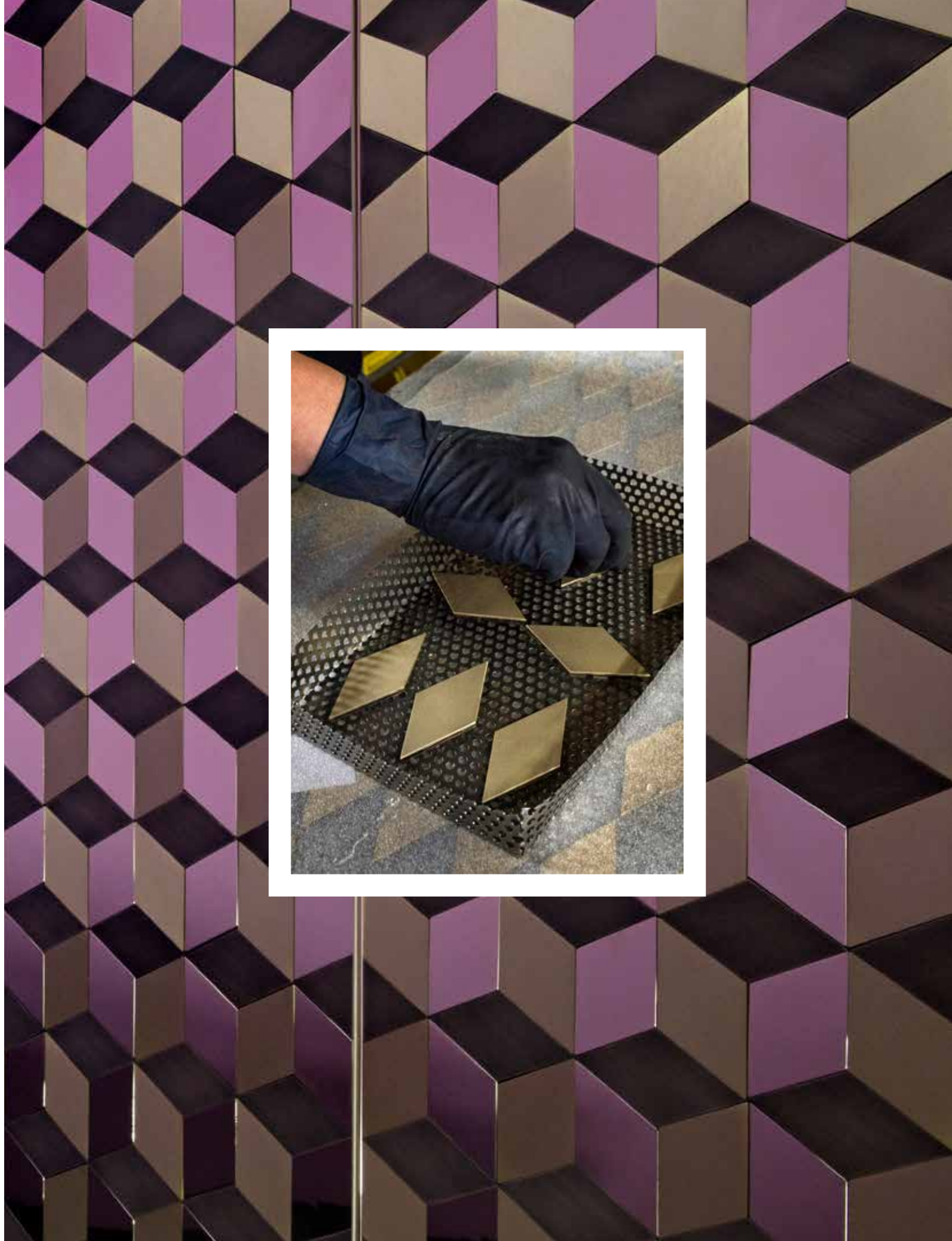
This page

Side table—Pioneer T53L





Trolley - Pioneer T63S
Cabinet - Biri C03 Limited 3 pcs
Chair - Safari S02





COLLECTION

The New Tactility

SAFARI S02 | LIMITED



Safari S02 Chair
Special edition of our Safari S02 Chair. Upholstered in soft touchable Brown Nubuck leather from Italy. The high quality cooper plated and non varnished frame will age gracefully in time. Only 50 pieces will be made.

SAFARI S02



Safari S02 Chair
Avant-garde in its look and function, this light-weight design features a flexible backrest, which adjust to your daily movements. The frame of this chair is made from a stainless steel tube bent in a flowing line.

Dimension
Width: 50 cm
Height: 83 cm
Sit height: 44 cm
Sit depth: 43 cm

Designed in
1986

Frame
1. Ristretto
2. Stainless Steel Gloss

Upholstery
3. Dedar Adamo & Eva 104
4. Dedar Plaid 002
5. Dedar Jules 008

Material Options

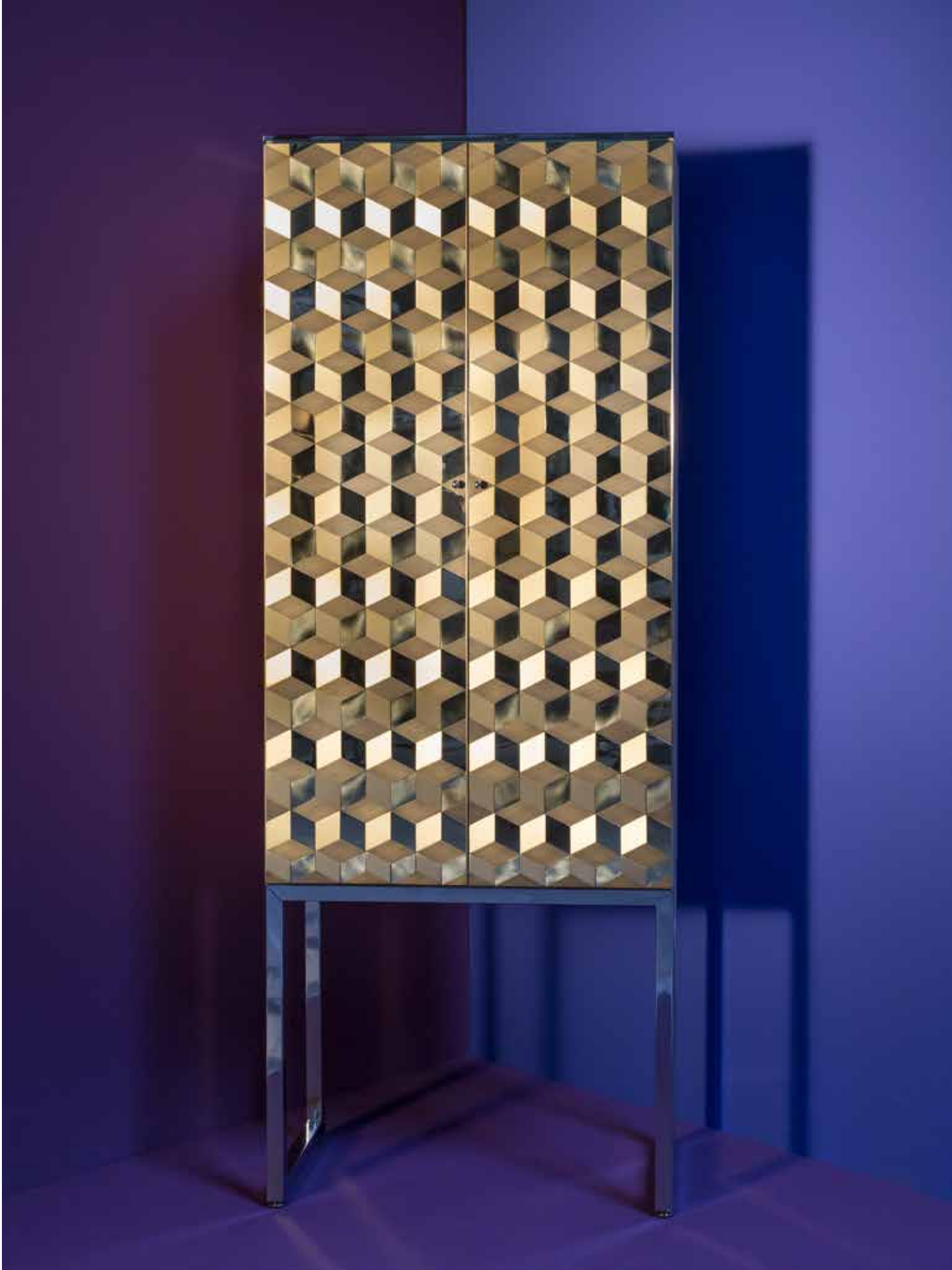
1	3	5
2	4	

BIRI CO3 | LIMITED



Biri CO3 Cabinet
A conversation piece. Our Biri Cabinet C03 in a Limited version, named 'New Perspective'. Created by 476 tiles in 2mm solid natural brass. Each tile is hand polished, brushed or patinated in our atelier. The cabinet is made of solid oak made from 150 year old trees and dried for 3 years outside for a natural drying process. The inside of the cabinet is lacquered in a beautiful turquoise, resembling the Norwegian Sea. The outside of the cabinet is stained in White Wash. The Biri frame is made from Finnish stainless steel mirror-polished by hand. Only 3 pieces will be made.

Dimension	Frame	Material
Length: 35 cm	1. Stainless Steel Gloss	
Width: 70 cm		
Height: 184 cm	Cabinet	
	2. Solid Wood Oak White Wash	
	Pattern in: Brass Matt,	
	Brass Patinated, Brass Gloss	





SAFARI GP01

PIVOT T82

RISTRETTO



PIONEER T54/3L

SAFARI S02



BRASS PATINATED

SAFARI MW10

PIVOT T48/4



PIONEER T79L



DUET GB03



PIONEER T53D

SAFARI MW24



SAFARI G01

OAK 2448



ALABASTER GLASS

PIONEER T53L



PIVOT T82 | LIMITED



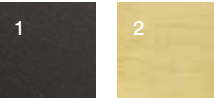
Pivot T82 Table
Special edition of our functional T82 side table. The brass table top is hand casted in a mold by our best craftsmen. All corners and angles are equal in this polygon table top. The surface has a natural hand polished finish. The three triangles who overlap each other, create a mysterious and symmetrical, structured pattern. We call this organised chaos, which symbolize a cosmopolitan lifestyle. Only 30 pieces will be made.

Dimension
Diameter: 60 cm

Frame
1. Ristretto

Top:
2. Handcasted and
Polished Brass

Material Options





PIVOT T82 | LIMITED



Pivot T82 Table
An elegant side table combining functionality with aesthetics. A special edition of the Pivot side table T82. The table top is made from ultra pure glass, hand casted in Germany, creating a unique tactility resembling alabaster. The frame is made of refined, solid brass tubes, hand treated to creating a soft matt and natural appearance. Only 30 pieces will be made.

Dimension
Diameter: 50 cm
Height: 50 cm

Frame
1. Brass Matt

Top
2. 30mm Alabaster:
hand casted glass

Material Options	
1	2



SAFARI S02



SAFARI GP03



PIONEER T79L



SAFARI MW24



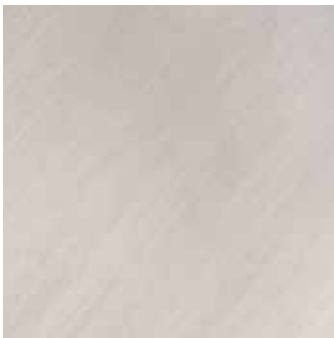
PIONEER T53



SAFARI MW10



PIONEER T63S



STAINLESS STEEL MATT



PIVOT T82



PIONEER T79 + DB



DUET GB03



BRASS AGED



PIONEER T57D




PIVOT T3456 | LIMITED



Pivot T3456 Table
Special edition of the Pivot dining table T3456. The table top is made from ultra pure glass, hand casted in Germany, creating a unique tactility resembling alabaster. The exceptional minimal look of the alabaster contrasts with the industrial look of the supporting brass tubing construction. The frame is made of solid brass tubes, treated with a new developed process, creating a rough but elegant finish. Only 10 pieces will be made.

Dimension	Frame	Material Options	
Length: 103 cm Width: 230 cm Height: 75 cm	1. Brass Aged	<div>1</div>	<div>2</div>
	Top 2. 30mm Alabaster: hand casted glass		



Every GHYCZY design takes its orientation from its purpose.
Technical solutions are applied approaching them from a
new perspective. Made to last a lifetime through materials that
age gracefully, GHYCZY furniture tells the unique story of
its owner. GHYCZY designs are recognizable, yet not idolized,
they are imitated but never replicated. They are collectables made
to be experienced, all day, every day.

OUR PHILOSOPHY

DESIGN

Since its foundation in 1971, GHYCZY celebrates timeless, modern furniture design with a strong authentic character. GHYCZY has invented many new ways of constructions and created versatile furniture that influenced the design world for over 45 years. At GHYCZY every design takes its orientation from its purpose. They are based on technical solutions that are looked at from new perspectives. Technology plays a central role in determining their form.

SERVICE

Together with the team, the customer creates a piece that is unique in its kind and is made to measure his needs. Our team takes pride in every product and keeps a record on who worked on the pieces. Made to last a lifetime GHYCZY offers a refurbishment service that will revive the beauty of the furniture as when it first arrived.

CONSTRUCTION

Every piece is made with passion by a small team of highly trained craftsmen and only produced by appointment. Made from natural materials like wood GHYCZY's furniture derive their beauty from nature's imperfection and will age gracefully. Whether it be a play with the cracks and knots in the wood or the irregularities created by the hand mould casting process, these elements are pure GHYCZY trademarks.

SUSTAINABILITY

Sustainability has long been a concern of GHYCZY. Every piece is designed and produced in one location. GHYCZY has a longstanding work-relationship with its suppliers located only a bike ride away from the workshop. GHYCZY creates lasting quality furniture using the smallest amount of materials possible. All parts used can be recycled, separated and reused, creating an interesting contrast to the mass productions of our times.

PETER GHYCZY The Designer

Peter Ghyczy (son of an aristocratic Hungarian Family) founded GHYCZY in 1971, a time of contraries. At this time the oil crisis and its following stagnant economic growth hit its peak and mass production had become fashionable. The Club of Rome that manifested its will to make a difference for future generations, however, was Peter Ghyczy's influence.

Ghyczy wanted to set an example and made it his mission to work against mass production. He wanted to design, create, manufacture and distribute furniture with a lasting value for the sophisticated consumer. And he did. The first branded GHYCZY collection was exhibited in Cologne, with table models T09 and T14 an immediate success. Peter Ghyczy was the first designer to ever establish a clamping technique between glass and metal which was soon to be one of the most imitated ideas in modern furniture.



“DESIGNING MEANS
CREATING ORDER.”

Peter Ghyczy